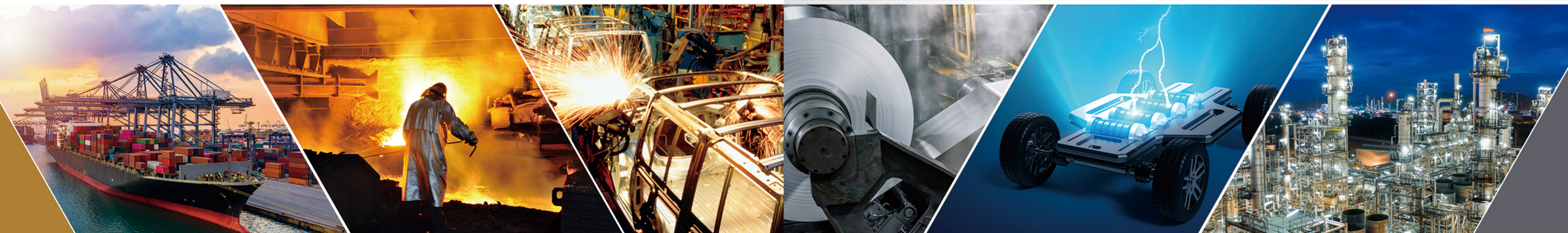




# PG METAL

GLOBAL BEST MATERIALS COMPANY



WE PROVIDE BEST MATERIALS & SOLUTION

#### PG METAL Co., Ltd

18, Gilcheonsaneop 3-gil, Sangbuk-myeon,  
Ulju-gun, Ulsan, Republic of Korea  
T +82-52-247-5052 F +82-52-249-6061

#### PG MATERIALS Co., Ltd

1F, 20-5, Daeri 1-gil, Beomseo-eup, Ulju-gun,  
Ulju-gun, Ulsan, Republic of Korea  
T +82-52-977-5052 F +82-52-977-6061

#### PG MATERIALS Co., Ltd / CHINA

Rm.312, No.3152 Hechun Road,  
Minhang District, Shanghai, China

#### ANSAN Branch Office

122, Tripleplex 303, 37-9, Pungjeon-ro, Danwon-gu,  
Ansan-si, Gyeonggi-do, Republic of Korea  
T +82-31-8044-6517 F +82-31-8044-6518





## about PG METAL

**PG Metal will serve high quality material to industrial site.**

PG Metal Co., Ltd participates in product development and provides solutions with expertise in materials such as aluminum, stainless steel, and copper used in electrical and electronic equipment, automobile parts, ship parts, plants (insulation), home appliances and building materials.

We supply customers efficiently and quickly with the most suitable materials to fulfill their needs.

## CONTENTS

- 3P Greeting / Company Overview
- 4P Company History / Certifications
- 5P Major Customers
- 6P **Vision**
- 7P Business Process
- 8P Technological Strengths 1 / BPA(Battery Pack Assy)
- 9P Technological Strengths 2
- 10P Business Areas
- 11P Electronics
- 12P Electronics
- 13P Automobile Parts
- 14P Ship Parts
- 15P Plants / Insulation Accessories

Company Name	PG METAL CO., LTD.	
CEO	Lee Sang Hwa	
Foundation Date	February 2008	
TEL	Head office. +82-52-247-5052	Ansan Branch. +82-31-8044-6517
FAX	Head office. +82-52-249-6061	Ansan Branch. +82-31-8044-6518
WEBSITE	www.pgmetal.co.kr	
Main	Supply Raw materials to the secondary battery industry	
Business	Supply Automotive Parts' Raw materials	
	Supply Ship Building related Raw materials	
	Supply Insulation materials for Plant's Construction	
	Trade	
Address	Head office. 18, Gilcheon Industrial 3-gil, Sangbuk-myeon, Ulju-gun, Ulsan, Korea	
	Ansan Branch. 122, Tripleplex 303, 37-9, Pungjeon-ro, Danwon-gu, Ansan-si, Gyeonggi-do, Korea	



# HISTORY of PG METAL



## CERTIFICATIONS



ISO 9001

ISO 14001

MAINBiz

## OUR CLIENTS





# VISION

## HIGH QUALITY MATERIALS PG METAL

We will supply highest quality materials.

Building a global supply chain



Global Sourcing



New Material Development



Overseas Plant Projects

Vehicle weight reduction

Electrical&Electronic new materials

Africa, Middle East, Asia

# BUSINESS PROCESS



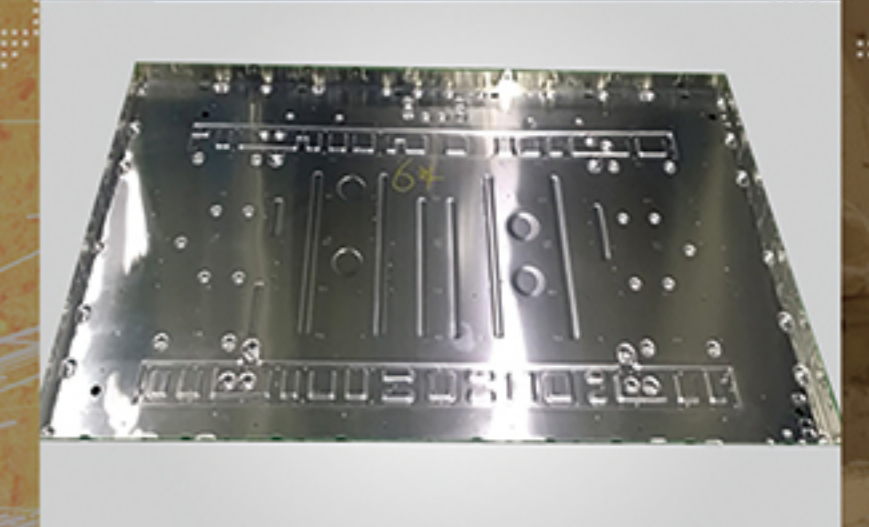
1 Product Development  
Find solution



3 Production & Processing  
Material production  
Processing



5 Package Protection



2 Material Development  
Test



4 Quality Inspection  
Specification

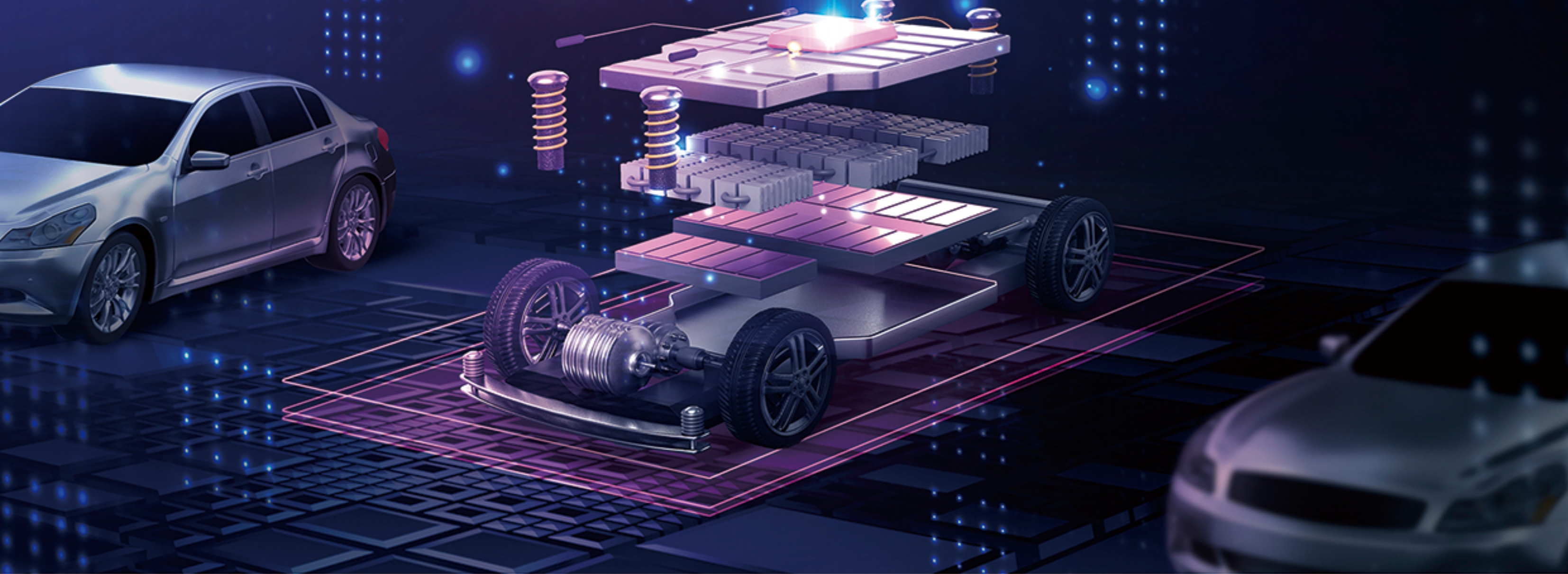


6 Delivery  
Feedback



# Technological Strengths

Develop and provide solutions that meet customer needs  
(suitable material suggestion, processing method, formability, surface treatment, etc.)

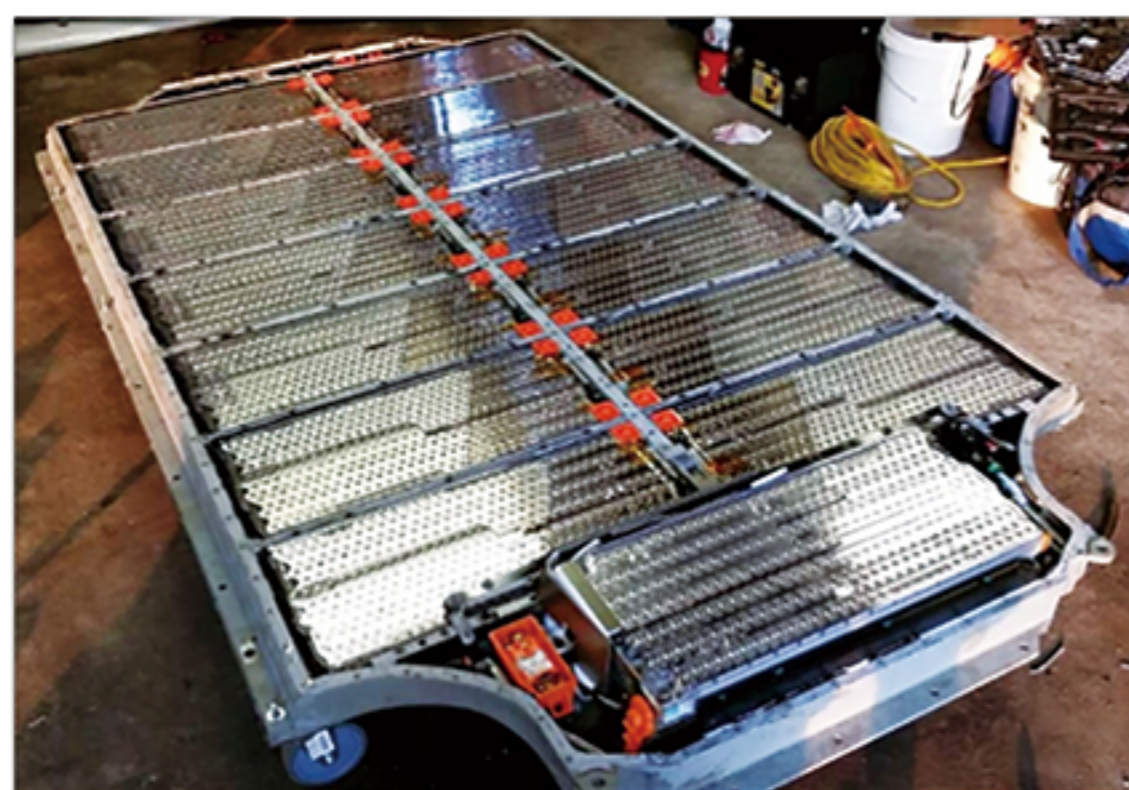


## Electric vehicle battery case, secondary battery material development&mass production material supply

- Hyundai-Kia Motors EV battery case development/design participation and material supply.
- Supply of materials for safety device for cylindrical secondary batteries that require precision processing.
- Needs perfect gauge tolerance management.

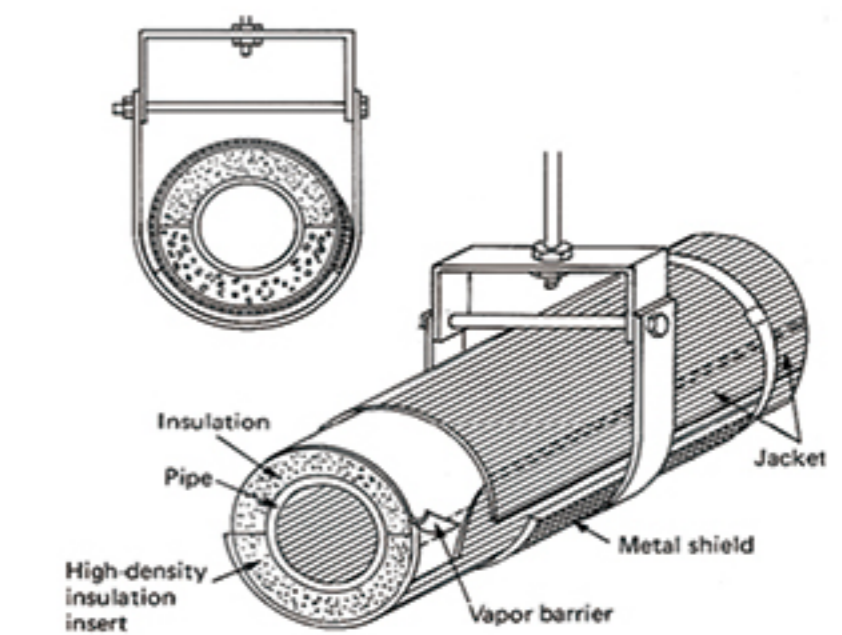


## BPA(Battery Pack Assy)



## Direct production of Plant Insulation Vapor Barrier

- Increased heat generation through surface area expansion by wrinkle processing existing jacketing aluminum sheet for piping.
- Moisture-permeable prevention functionality is provided by attaching polykraft paper to wrinkled surface.





# BUSINESS AREA

## AUTO Parts

- EV, BPA Materials
- Auto Gasket Materials
- Heat Shield Materials
- Auto Trim Materials
- Roof Molding Materials
- Weather Strip Insert Metals
- Door
- Hood
- Tailgate
- Membrane

## ELECTRONICS

- Cylindrical Secondary Cell Top Cap Materials
- Pouch Type Secondary Cell Cover Materials
- Metal PCB
- Prismatic Secondary Battery
- LED TV Back Panel
- Heat(Solar) Collection
- Busbar
- Electrolytic Copper Foil



## SHIP Parts

- Skin Materials
- Deck Materials
- Master Materials

## Plants

- Aluminum Sheeting
- Stainless Jacketing
- Insulation Materials
- Insulation Accessories
- Insulation Pin
- Offshore Wind Power Structures

# ELECTRONICS





# ELECTRONICS



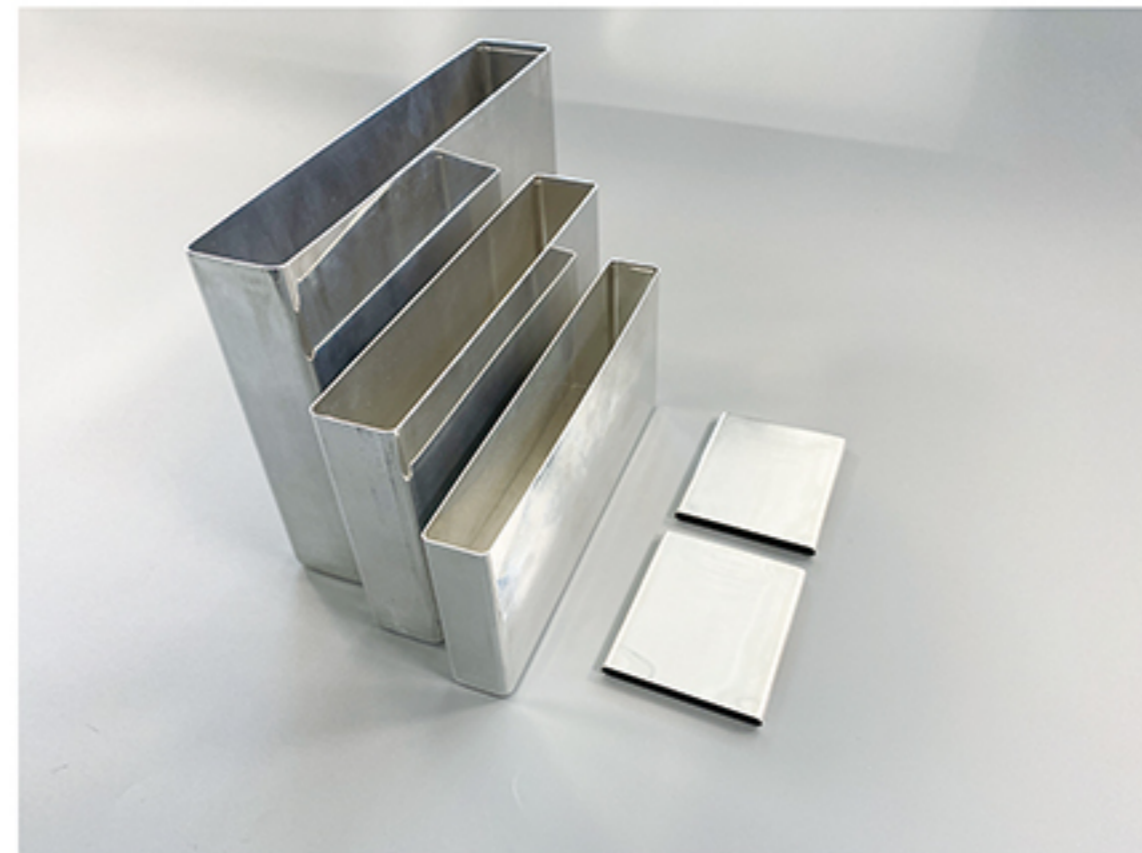
Cylindrical Secondary Cell Top Cap Materials



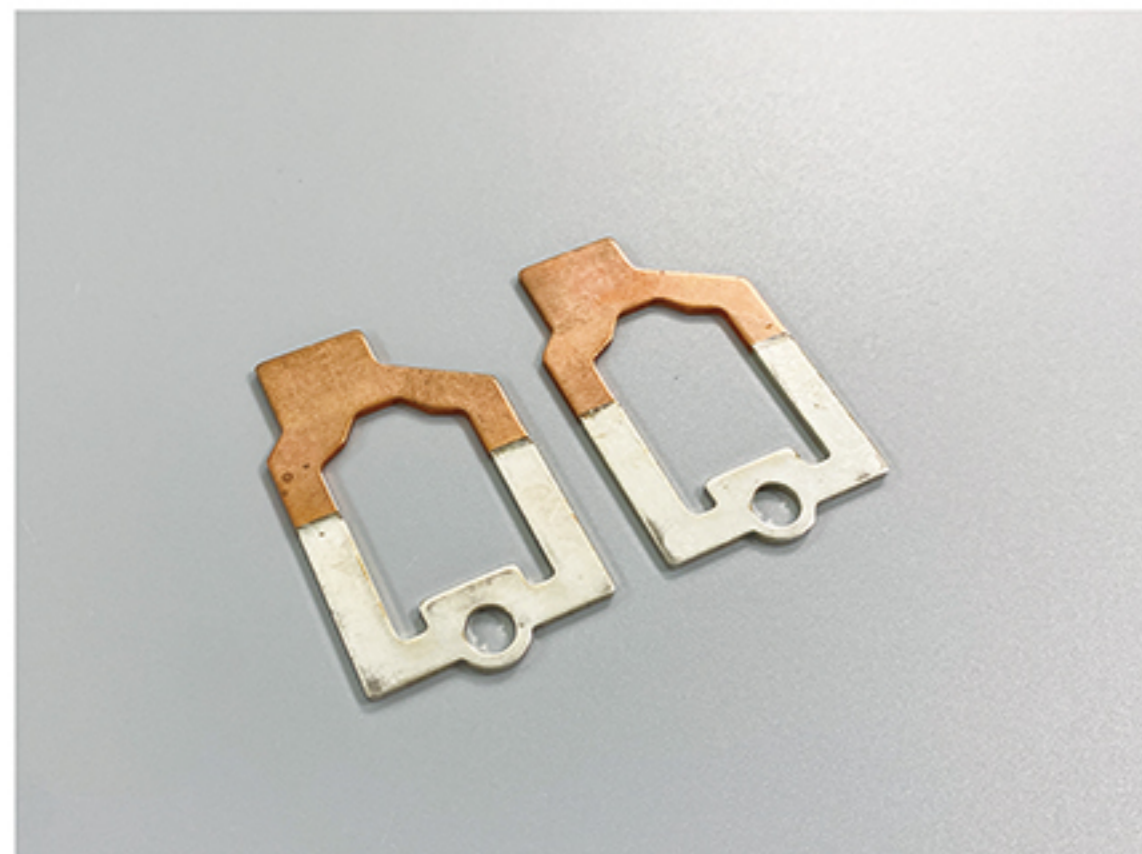
Pouch Type Secondary Cell Cover Materials



Metal PCB



Prismatic Secondary Battery Materials

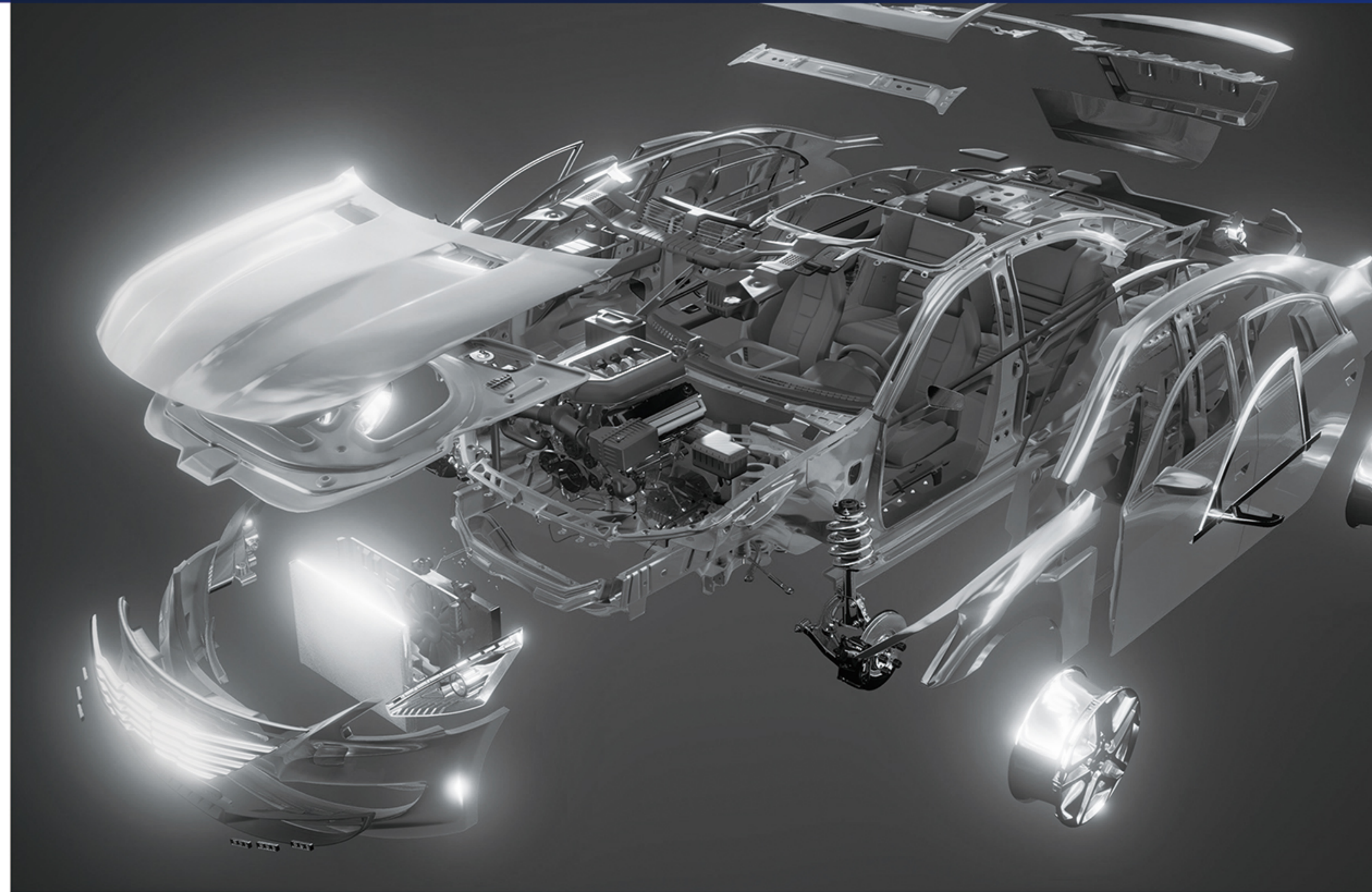


Busbar

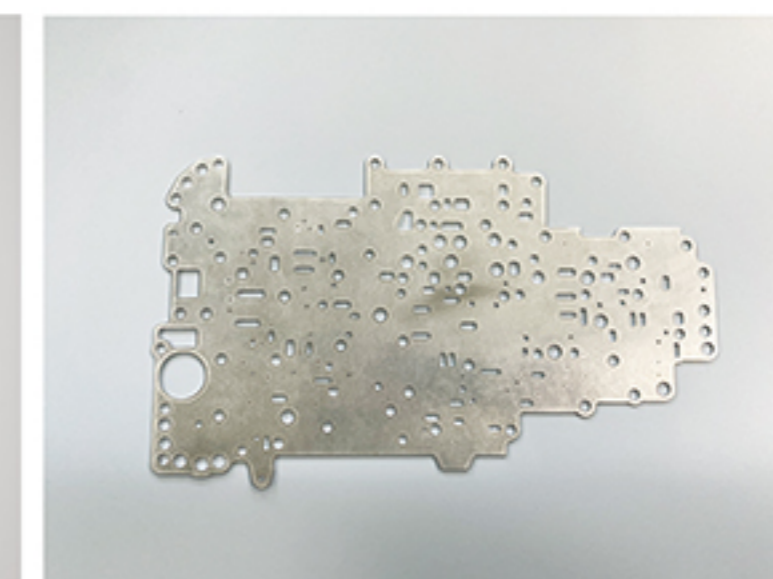


Electrolytic Copper Foil

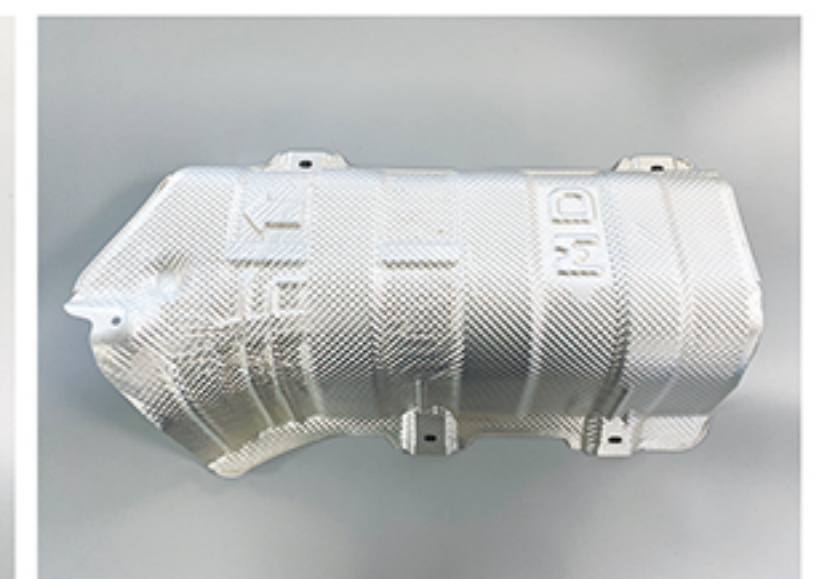
# AUTO PARTS



EV, BPA Materials



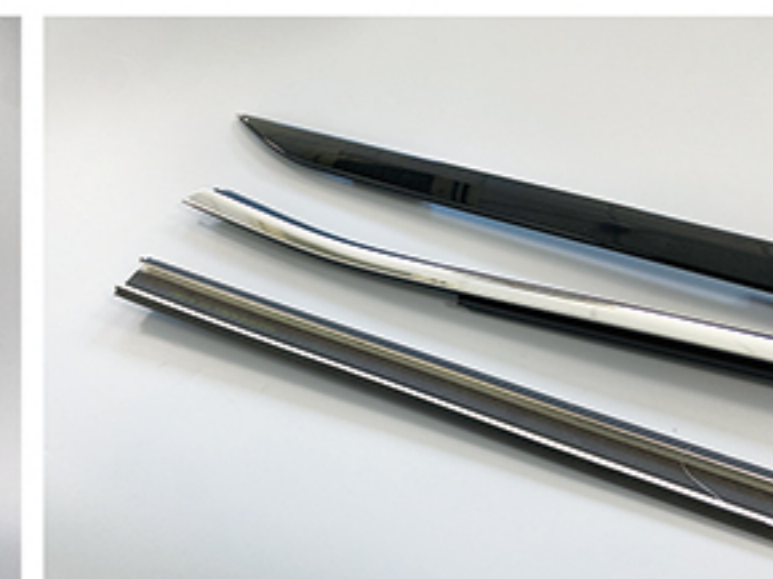
Auto Gasket Materials



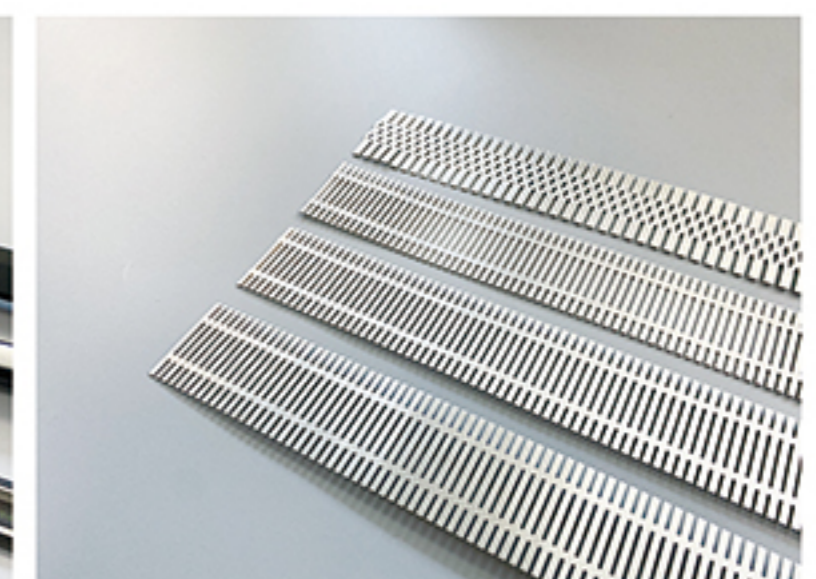
Heat Shield Materials



Auto Trim Materials



Roof Molding Materials



Weather Strip Insert Metals



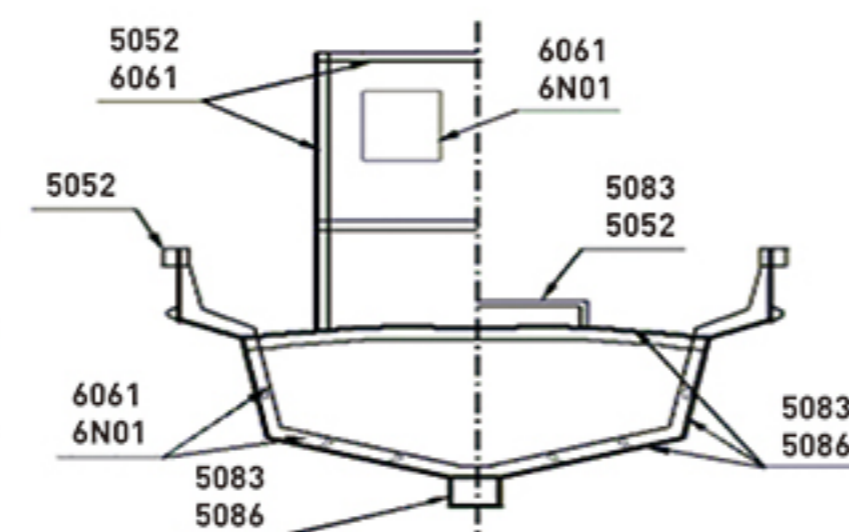
# SHIP PARTS



## REFERENCE

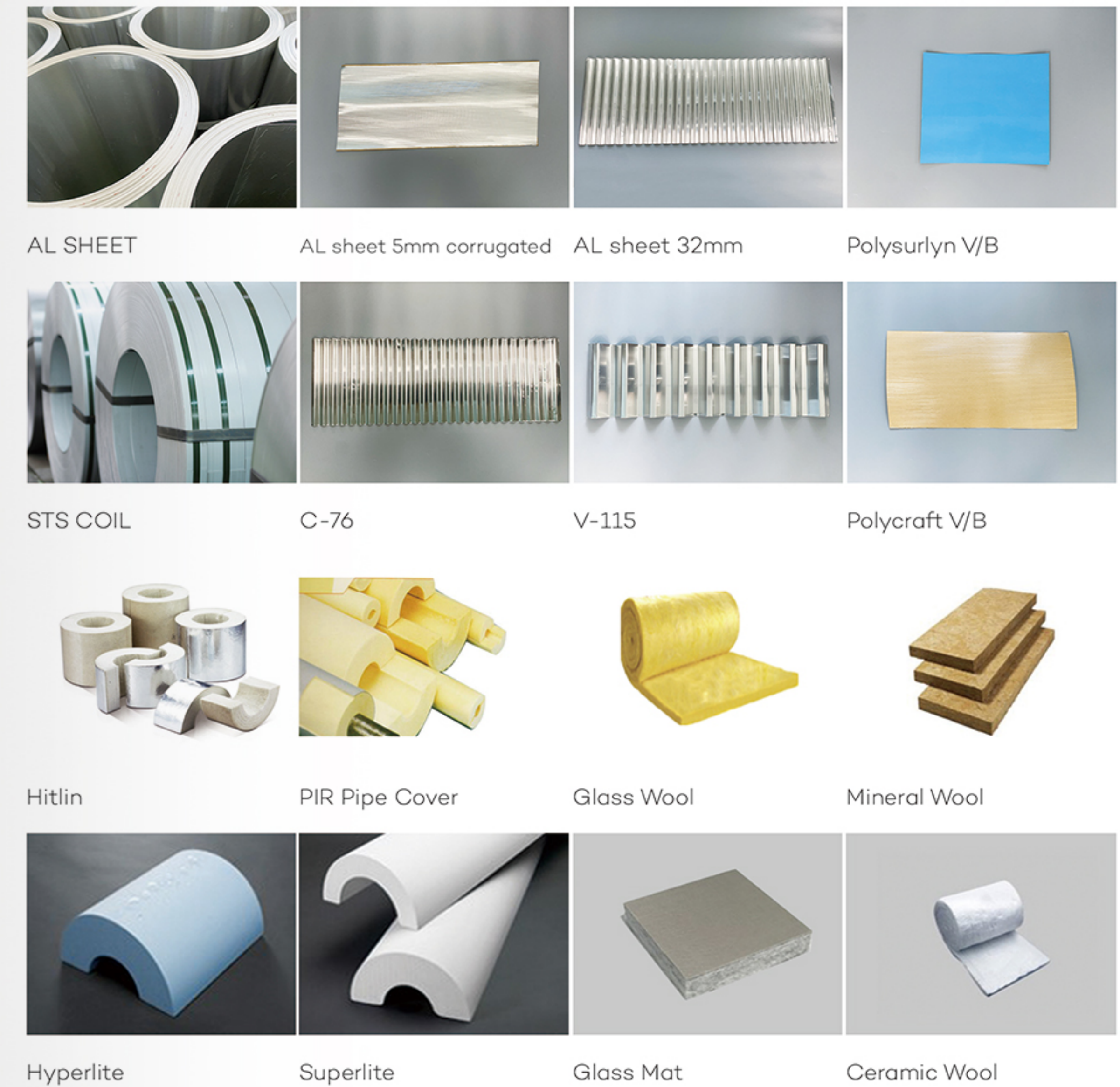
Applications and Types of Alloys

Classification	Alloy	Using Form
Skin	5083, 5086	Sheet, Shape
Keel	5083	Sheet
Partition	5083, 6061	Sheet
Rib	5083	Sheet, Shape
Engine Bed	5083	Sheet
Deck	5052, 5083, 5086	Sheet, Shape
Wheelhouse	5083, 6N01, 5052	Sheet, Shape
Bulwark	5083	Sheet, Shape
Vent Pipe	5083, 5052	Sheet
Master	5083, 5052	Pipe, Tube



<Buoy>

# PLANT INSULATION



## INSULATION ACCESSORIES

